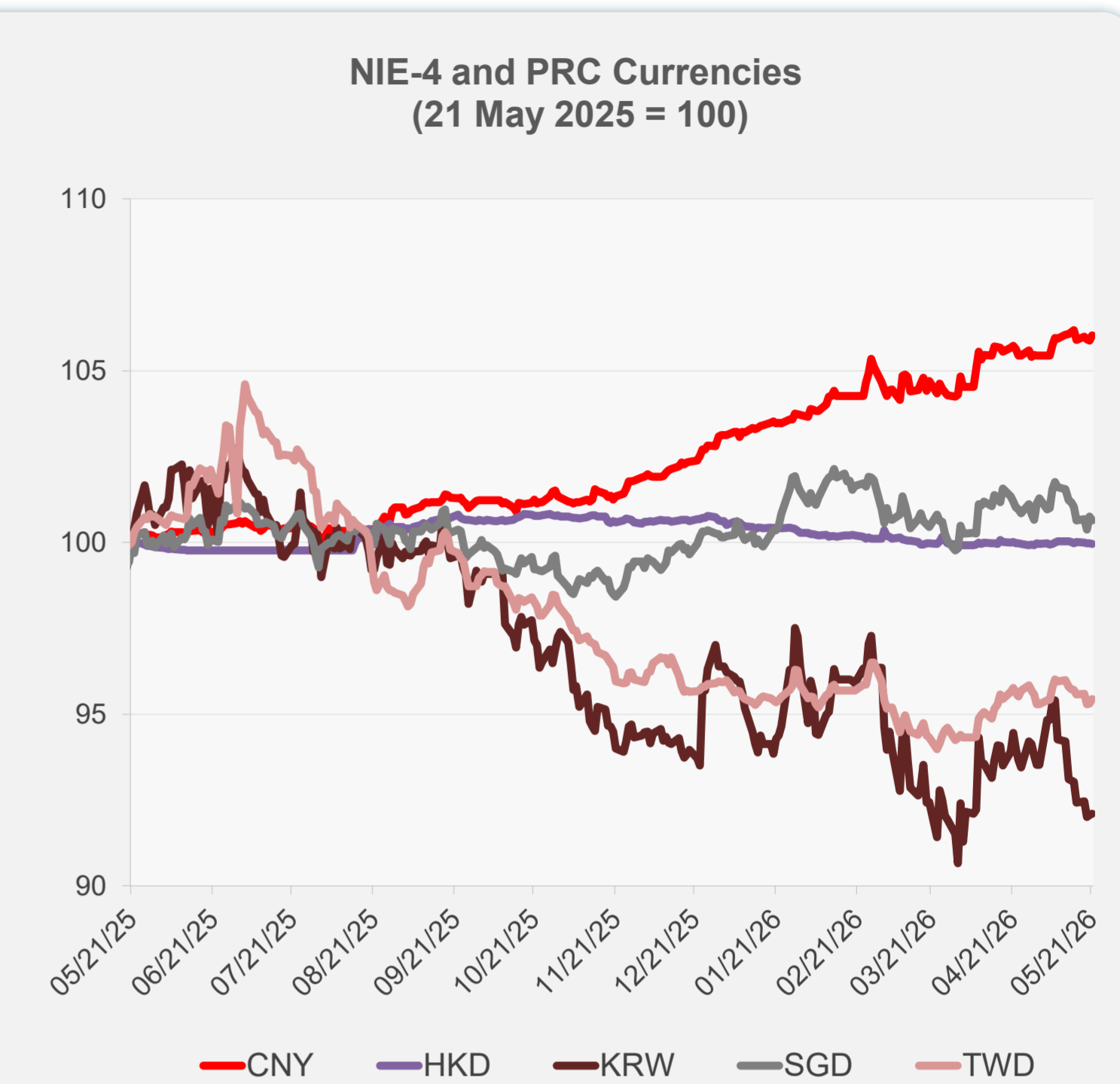
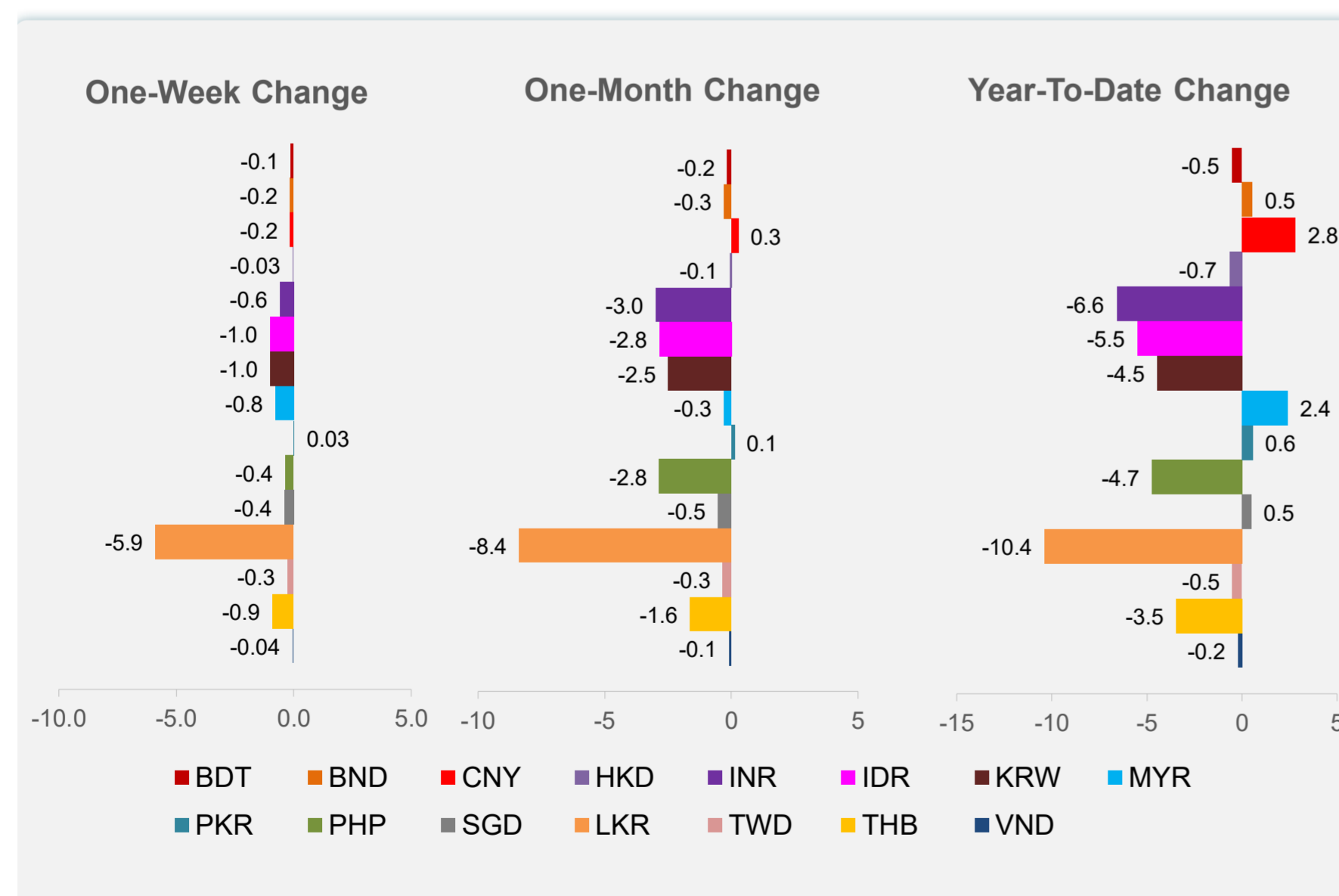
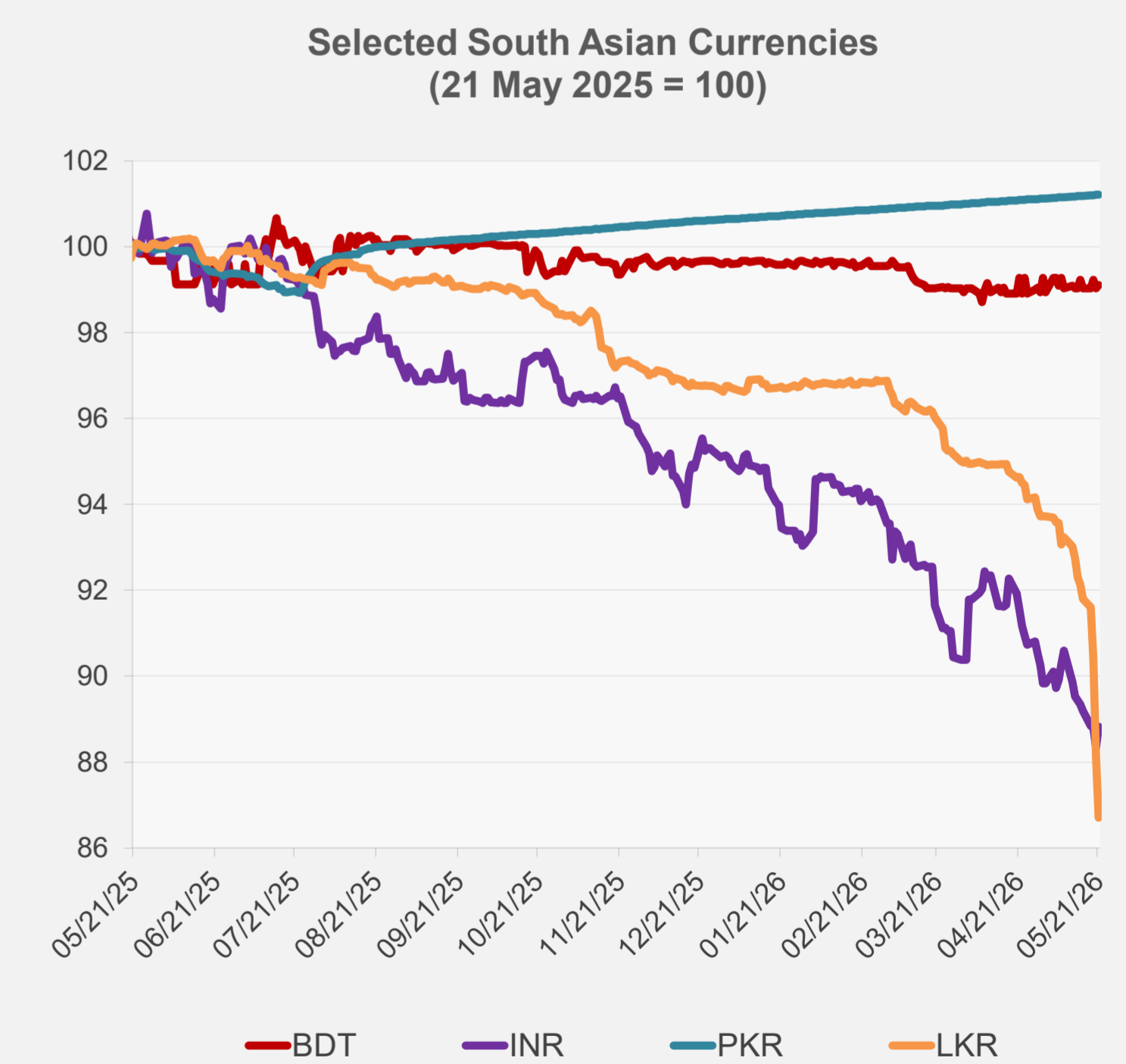
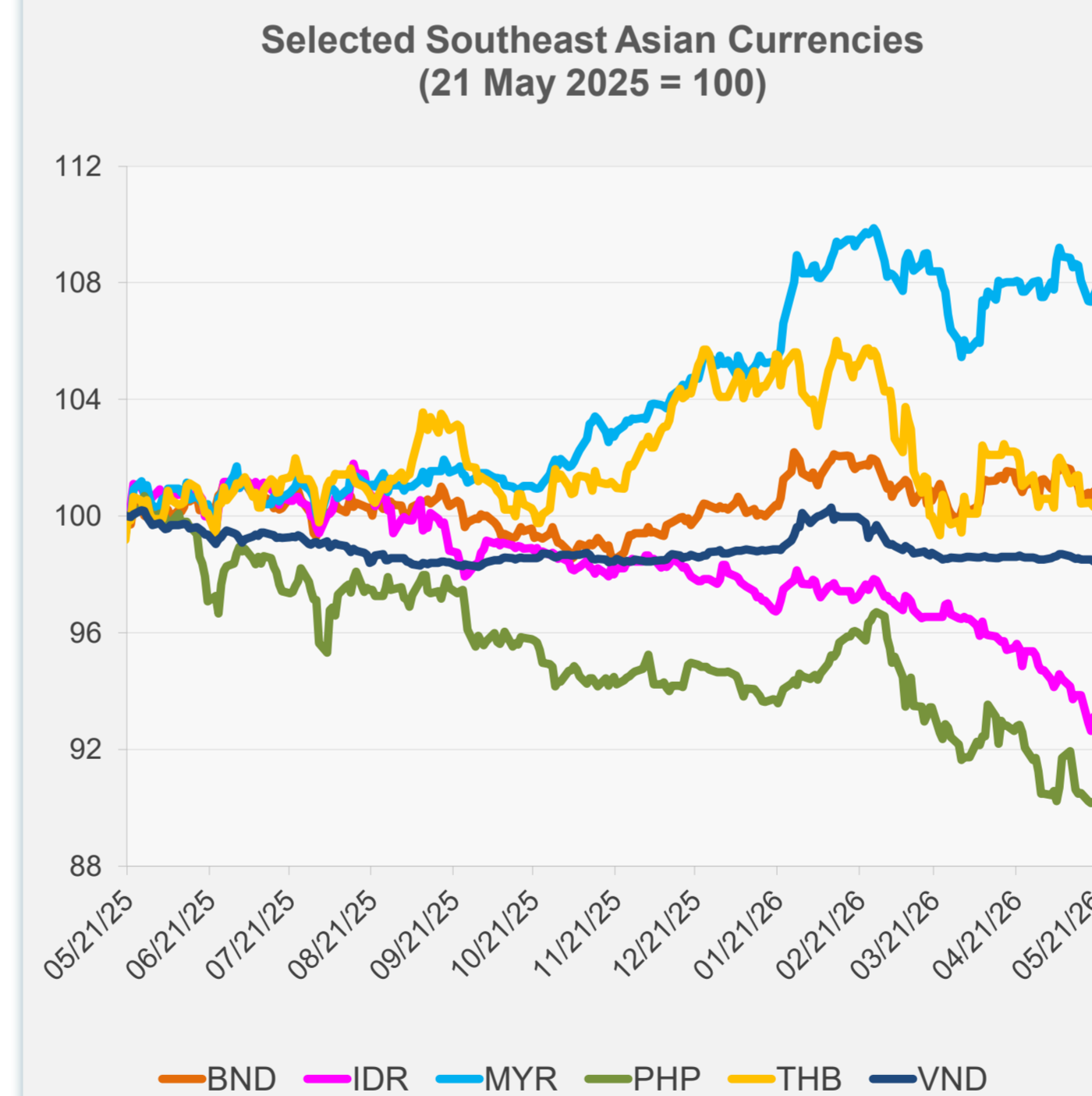


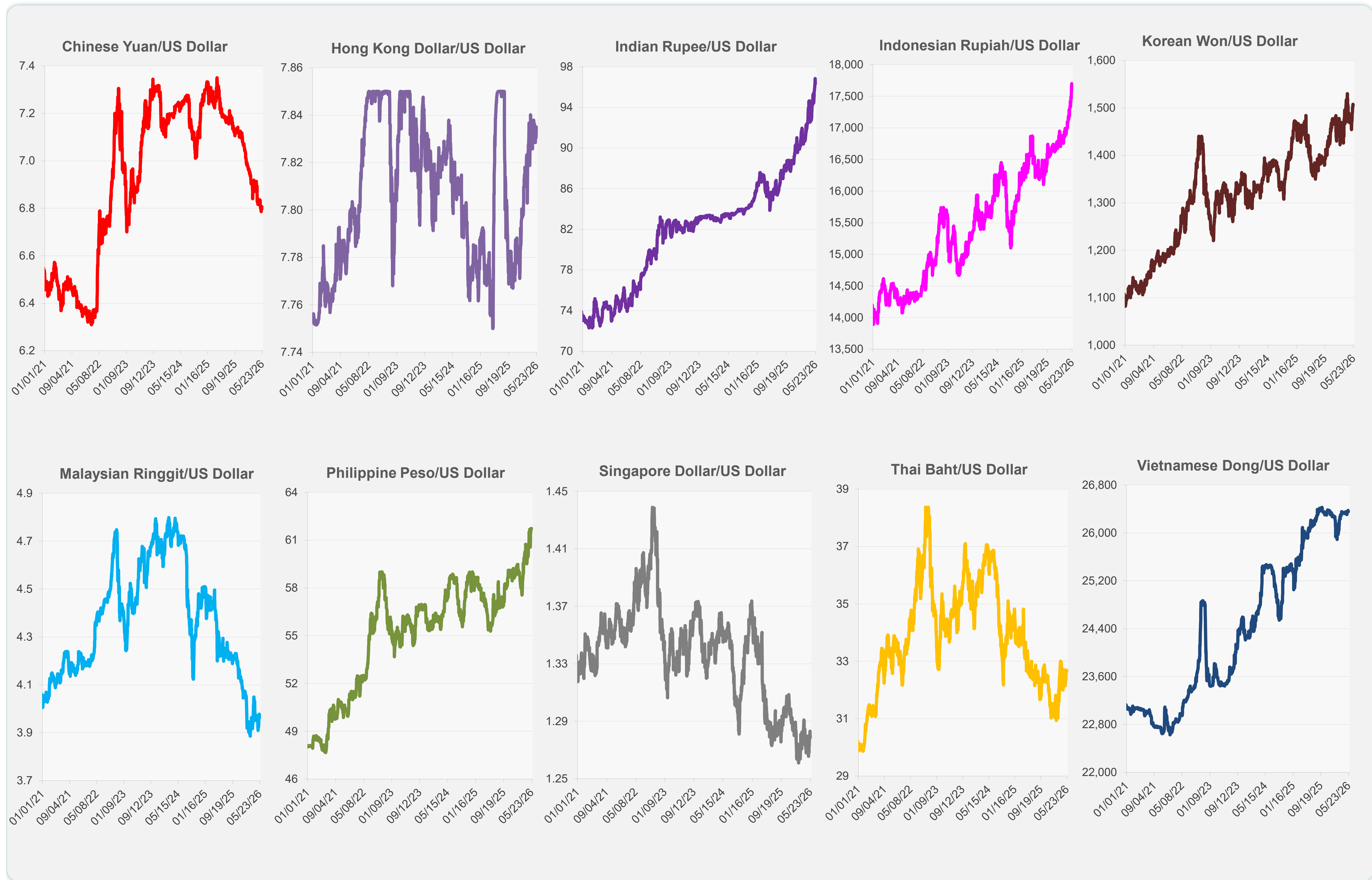
	Latest Closing	% change from Previous Day	% change from 01-Jan-26
Euro	0.86	-0.23	-1.29
Japanese yen (JPY)	159.03	0.03	-1.92
Bangladeshi taka (BDT)	122.90	0.08	-0.53
Brunei dollar (BND)	1.28	0.01	0.55
Chinese yuan (CNY)	6.80	0.14	2.82
Hong Kong dollar (HKD)	7.84	-0.02	-0.66
Indian rupee (INR)	96.32	0.55	-6.58
Indonesian rupiah (IDR)	17,645.00	-0.23	-5.50
Korean won (KRW)	1,506.10	0.05	-4.46
Malaysian ringgit (MYR)	3.96	0.19	2.41
Pakistan rupee (PKR)	278.52	0.01	0.57
Philippine peso (PHP)	61.73	-0.04	-4.73
Singapore dollar (SGD)	1.28	-0.12	0.49
Sri Lanka rupee (LKR)	345.50	-1.59	-10.39
Taipei,China NT dollar (TWD)	31.60	0.15	-0.50
Thai baht (THB)	32.64	0.17	-3.46
Vietnamese dong (VND)	26,355.00	0.07	-0.21



NIE = Newly Industrialized Economies



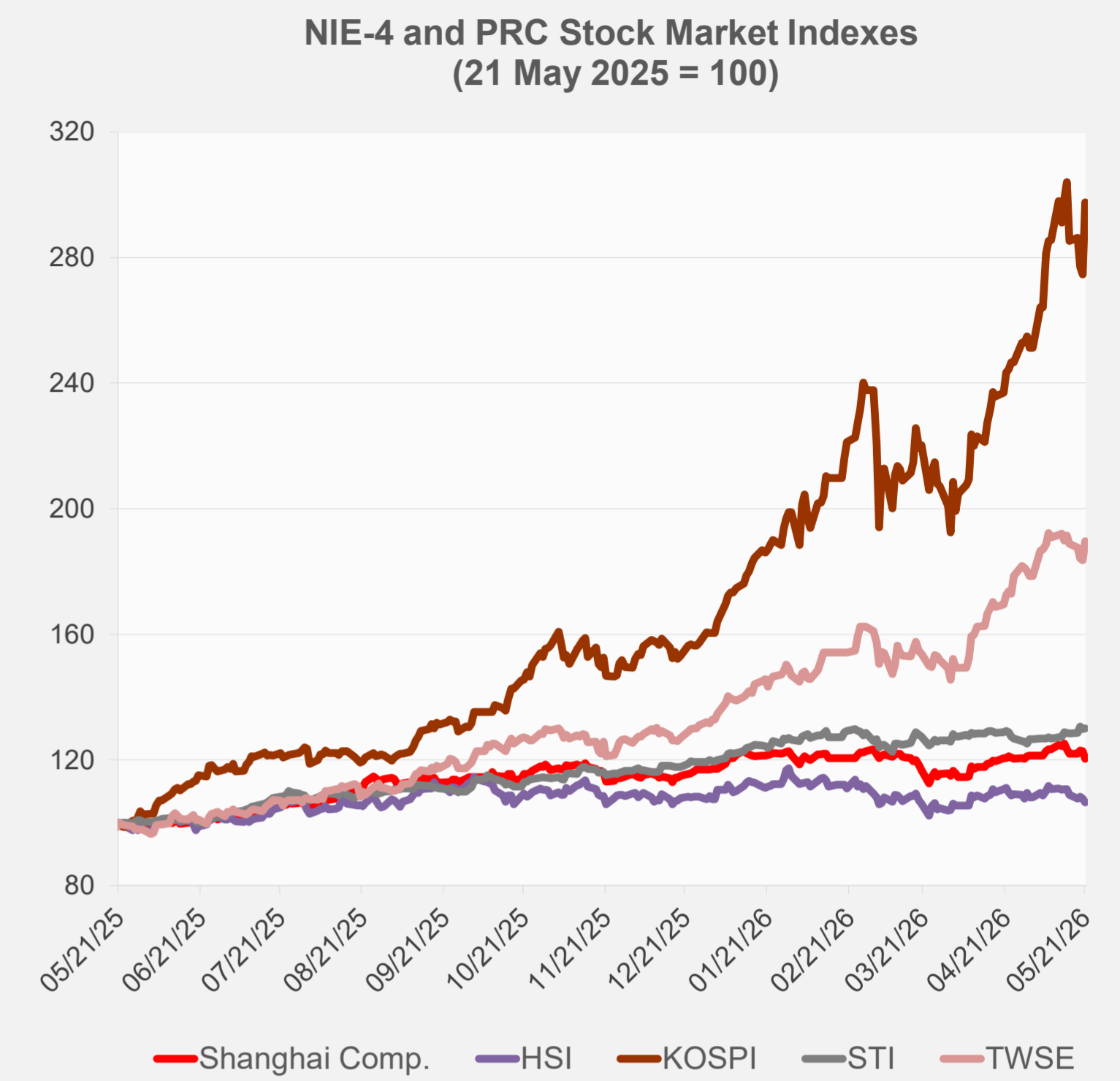
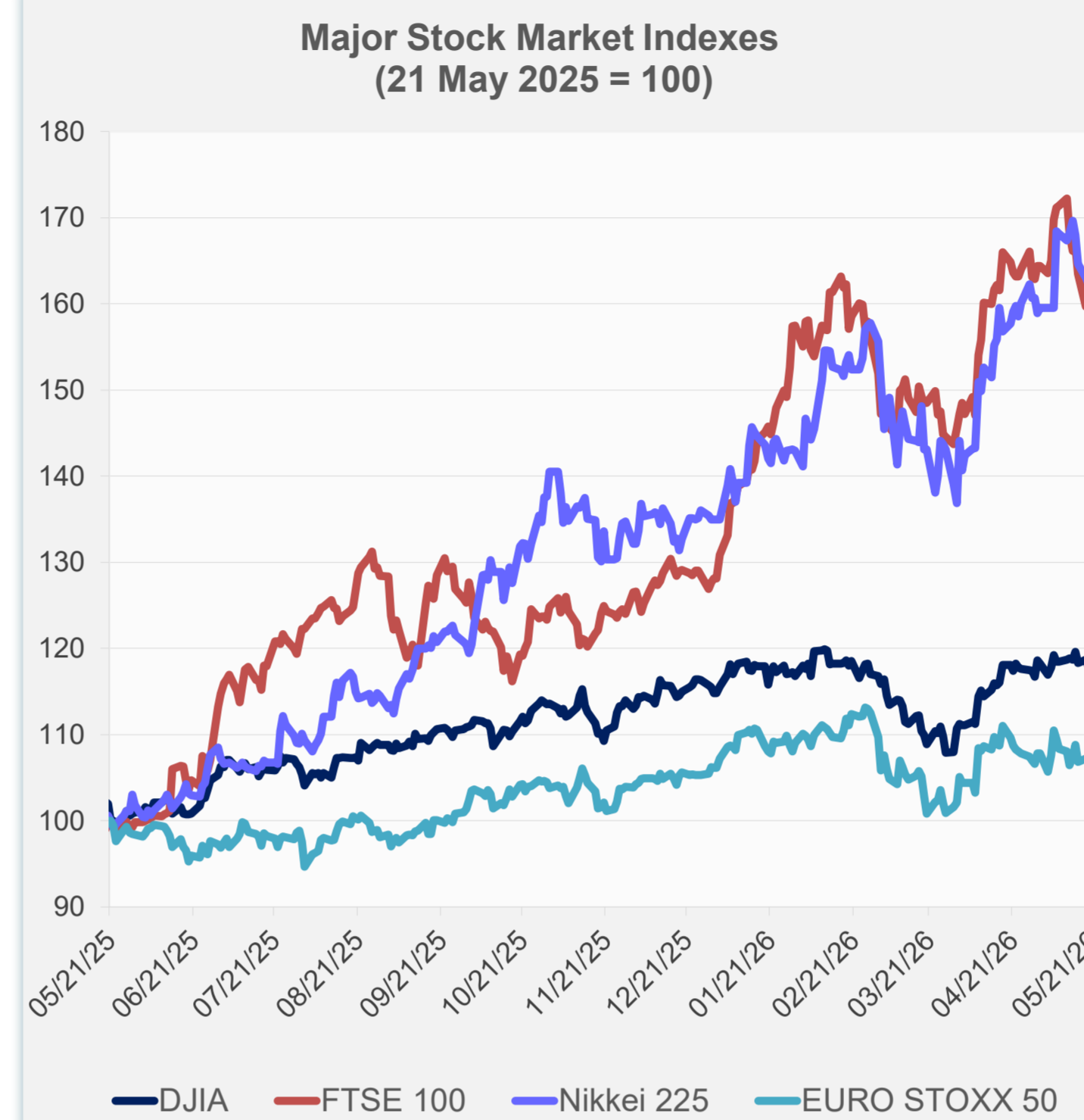
Note: Negative/Decreasing values indicate depreciation of local currency, and positive/increasing values indicate appreciation.
Source: ADB calculations using data from Bloomberg and Haver Analytics.



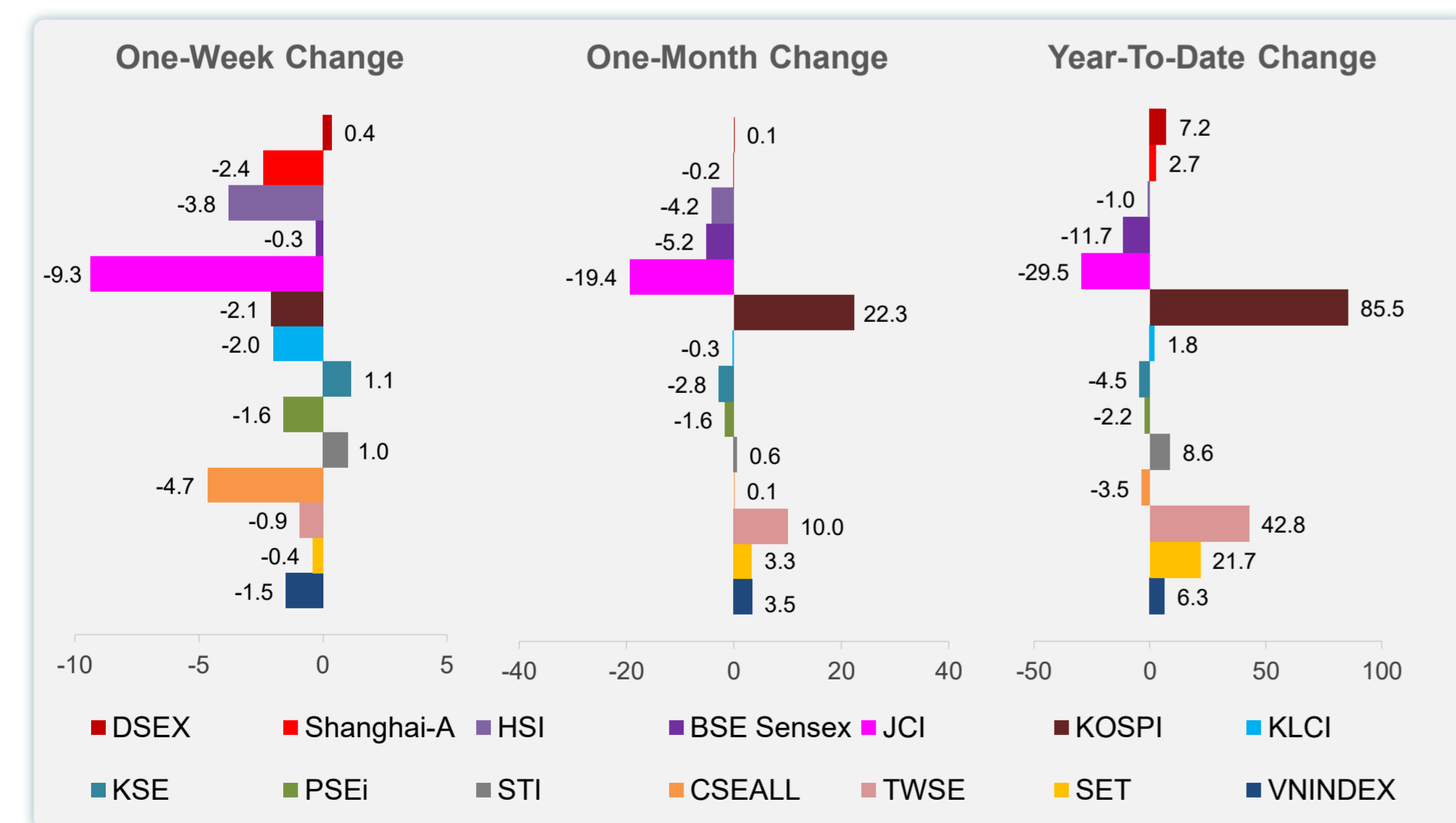
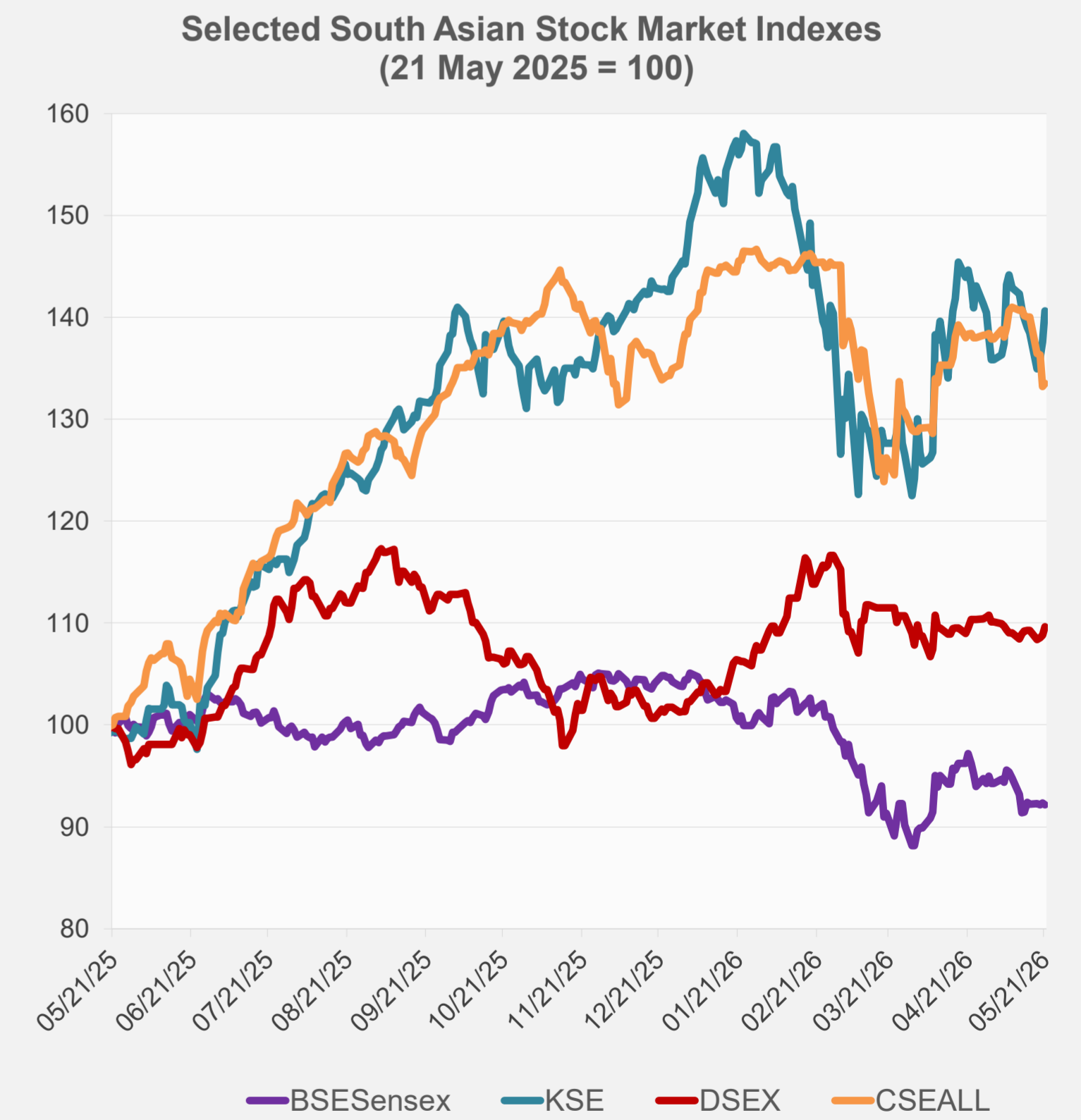
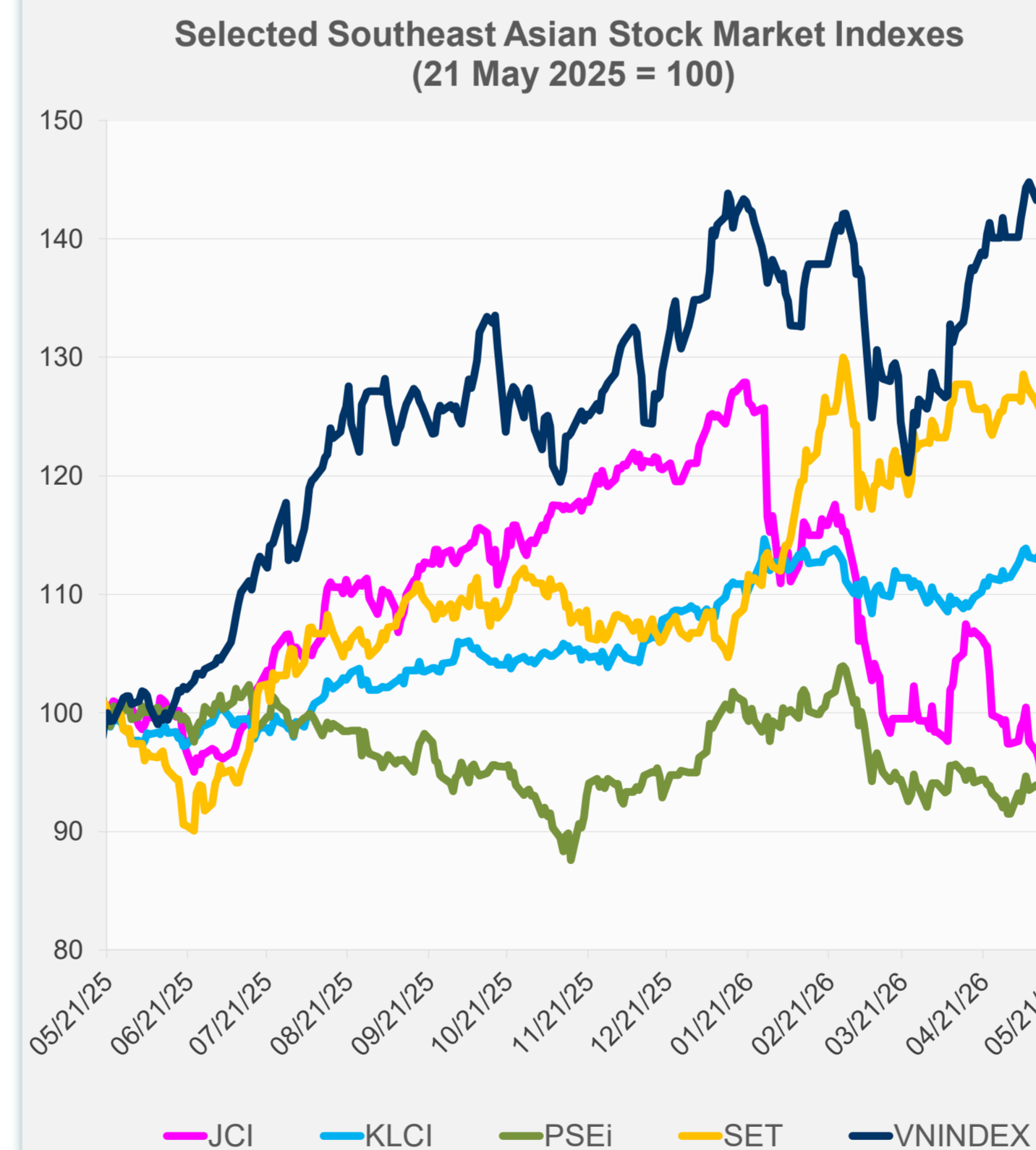
Source: Haver Analytics.

Daily Market Watch
STOCK INDEXES

	Latest Closing	% change from Previous Day	% change from 01-Jan-26
US Dow Jones Ind Avg	50,285.66	0.55	4.62
US NASDAQ	26,293.10	0.09	13.13
US S&P 500	7,445.72	0.17	8.77
UK FTSE 100	13,163.88	-6.05	16.89
EURO STOXX 50	5,960.32	-0.26	2.92
Japan NIKKEI 225	61,684.14	3.14	22.54
Bangladesh DSEX	5,264.12	0.80	7.20
PRC Shanghai Comp.	4,077.28	-2.04	2.73
Hong Kong, China HSI	25,386.52	-1.03	-0.95
India BSE Sensex	75,183.36	-0.18	-11.74
Indonesia JCI	6,094.94	-3.54	-29.51
Korea, Rep. of KOSPI	7,815.59	8.42	85.46
Malaysia KLCI	1,710.51	-0.42	1.81
Pakistan KSE 100	168,620.80	2.18	-4.45
Philippines PSEi	5,920.70	0.46	-2.18
Singapore STI	5,045.71	0.02	8.60
Sri Lanka CSEALL	21,833.77	0.21	-3.49
Taipei, China TWSE	41,368.21	3.37	42.83
Thailand SET	1,532.67	0.28	21.67
Viet Nam VNINDEX	1,896.89	-0.85	6.30



NIE = Newly Industrialized Economies



Sources: ADB calculations using data from Bloomberg and CEIC Data Company.



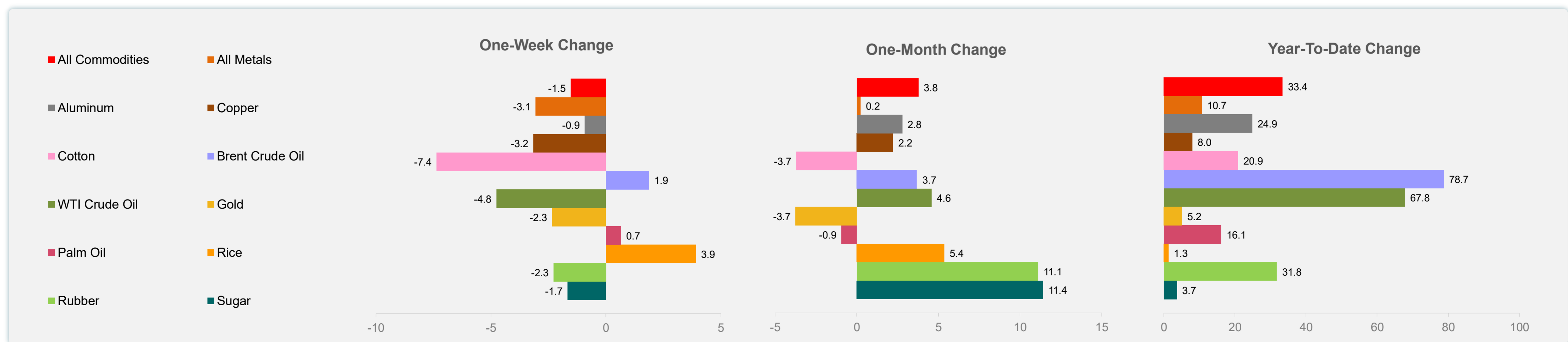
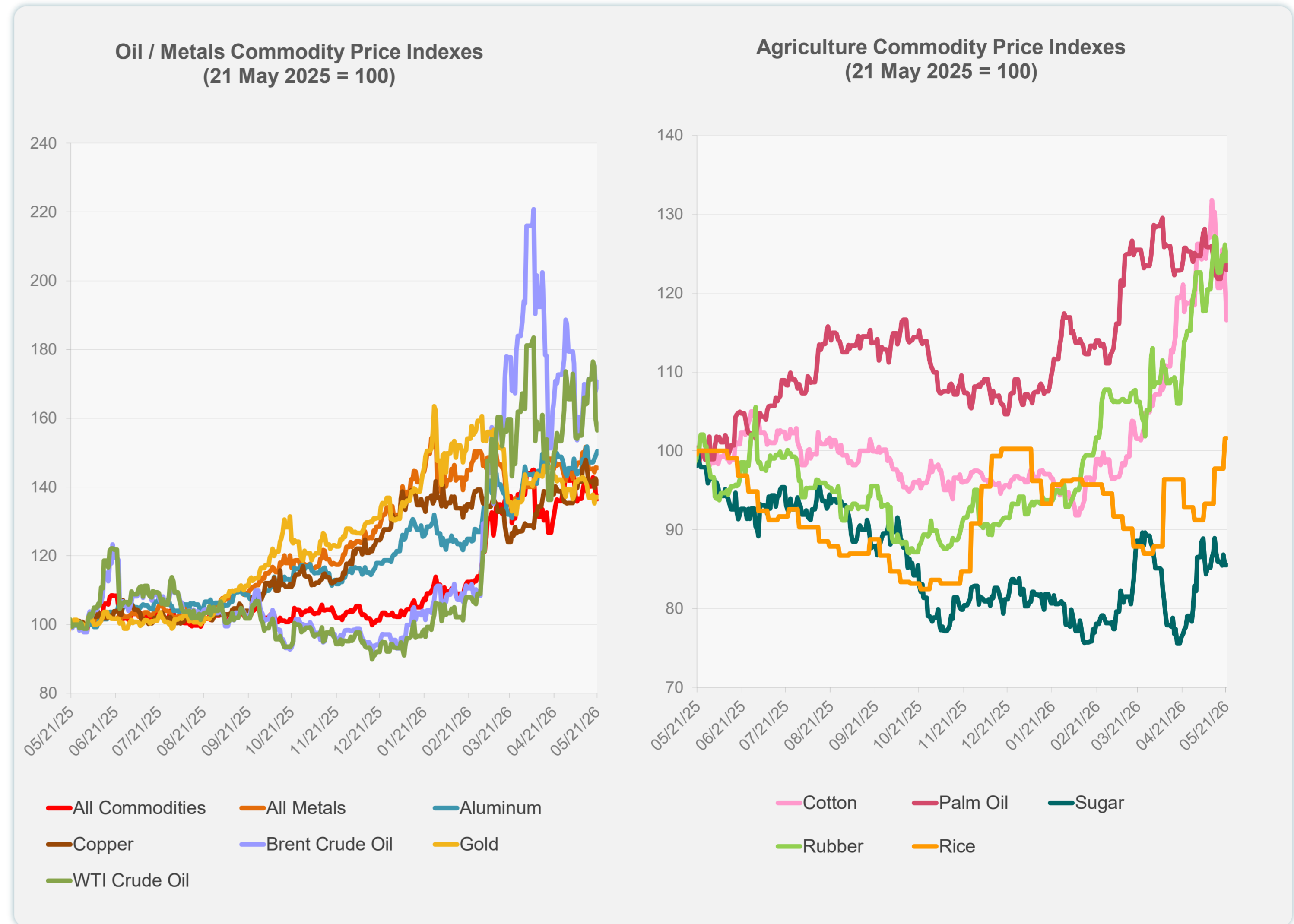
Sources: ADB calculations using data from Bloomberg and CEIC Data Company.

Daily Market Watch
COMMODITY PRICES

	Unit	Latest Closing	% change from Previous Day	% change from 01-Jan-26
S&P All Commodities	US\$	731.78	-1.27	33.41
S&P All Metals	US\$	491.07	-0.08	10.66
Aluminum	US\$/metric ton	3,706.72	0.81	24.89
Copper	US\$/metric ton	13,455.86	-1.03	8.05
Cotton	US cents/lb	74.98	-4.61	20.90
Brent Crude Oil	US\$/barrel	111.61	1.68	78.73
WTI Crude Oil	US\$/barrel	96.35	-1.94	67.80
Gold	US\$/troy oz	4,543.05	-0.03	5.18
Palm Oil	US\$/metric tonne	1,124.96	-2.14	16.14
Rice ¹	US\$/metric ton	452.00	0.00	1.35
Rubber ²	US\$/kg	283.30	-1.63	31.77
Sugar	US cents/lb	15.34	0.00	3.72

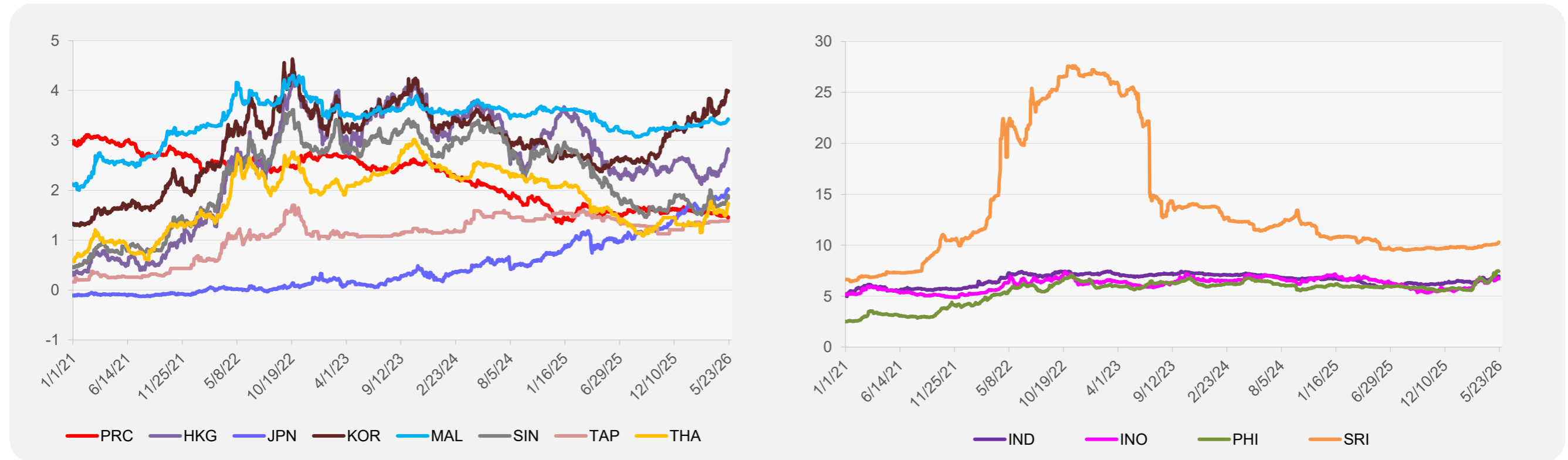
¹ Latest closing price from 20 May 2026.

² Singapore Exchange, Ribbed Smoked Sheet Rubber.

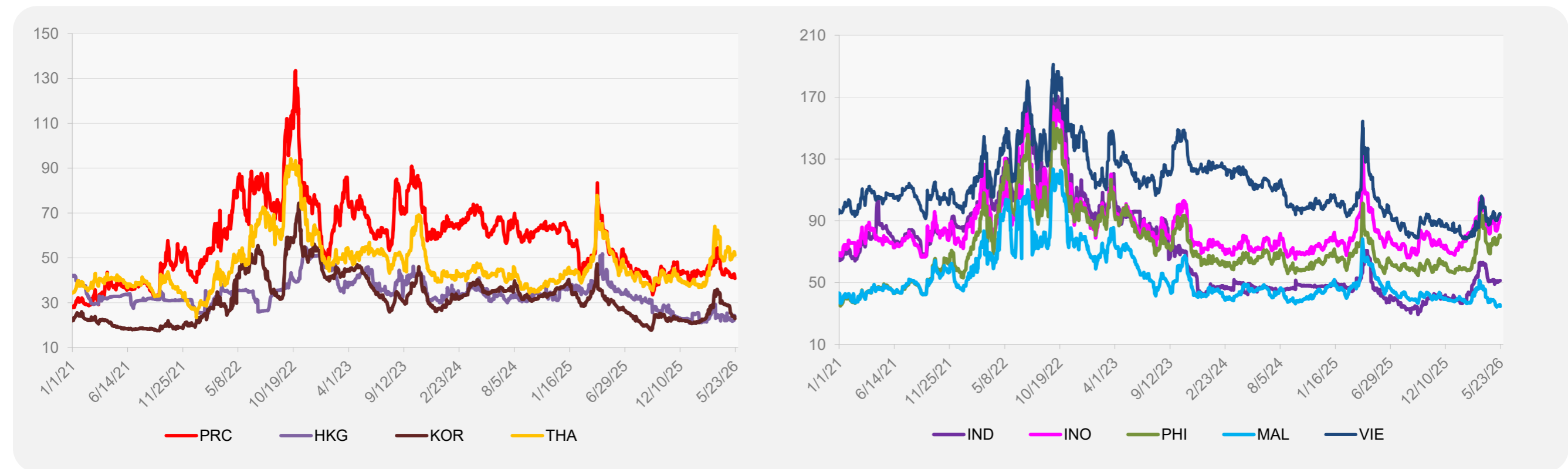


Source: ADB calculations using data from Bloomberg.

5-YEAR LOCAL CURRENCY GOVERNMENT BOND YIELDS (%)



5-YEAR CREDIT DEFAULT SWAP¹



¹ In USD and based on sovereign bonds.
Source: ADB calculations using data from Bloomberg.